



Welcome to the 2022 wrap-up edition of our BRIDGES Bulletin, where you can find out what we've been working on and learn about opportunities to connect with our work!

Thank you for a great year, BRIDGES CPT and Partners!

Our Partners:



CAROLE ROBERTSON CENTER
for Learning



In this edition of the BRIDGES Bulletin, we're excited to bring you the BRIDGES 2022 Year In Review, where we'll recap our year and share some plans for the future.

When reviewing the past year, we felt overwhelming gratitude for our BRIDGES CPT members and community partners. Your dedication and drive to improve the emotional and mental health of very young children and their families inspires us to keep moving this work forward!

Thank you to each and every one of you!

BRIDGES 2022 Highlights

Check out some of our favorite 2022 BRIDGES moments!

Presenting the BRIDGES vision at statewide and local meetings



BRIDGES CPT members at the annual C3 (Chicago Consortium for Community Engagement) conference and Illinois Children's Healthcare Foundation meeting



The 2nd Annual Healing Together Family Fair



Check out our
Thank-You Note
& Fair pics using
the QR code or at
<https://tinyurl.com/HTFF22>

- 15 partners/teams provided resources
- 37 attendees registered their information to stay connected
- 50 TopBox Food boxes donated
- Tons of fun and connections!

COFI's Statewide Community Mental Health Survey

- COFI gave out 212 trauma and mental health surveys in-person across the state
- In Aurora, Elgin, and Evanston, they also held community forums with 233 participants to learn about the community's mental health needs



"I came to the conclusion that independent of all of the needs that our communities have, this [the surveys] also serves as therapy, because people can get things off their chests and feel some kind of relief"

-Chicago Parent Interviewer



BRIDGES by the Numbers

Training our workforce

40 parents and providers participated in Circle of Security

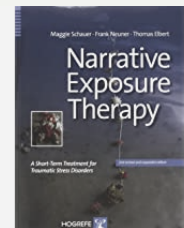
31 providers trained in Narrative Exposure Therapy (NET), including **4** CPT members

19 individuals trained in Survivor Mom's Companion (SMC), including **4** parent leaders

4 providers trained as Circle of Security group leaders

3 CPT members being trained as NET trainers

21 providers trained in DC:0-5



Expanding & connecting services

22 families served by Smooth Way Home NICU support project, led by Erikson's Fussy Baby Institute

10 patient navigation care coordination meetings with home visiting partners

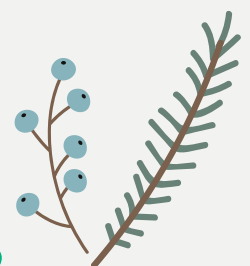
Expanding navigation pilot to Lawndale Christian Health Center



Supporting social needs

37 BRIDGES families served by patient navigation and NowPow since April 2022

NOWPOW



Happy Holidays from BRIDGES

For general inquiries related to BRIDGES, please contact us as BRIDGES@rush.edu